

LF16D

Linear Flex



Install sheet - Page 1

SPECIFICATION

LED surfaced mounted luminaires are class III for Safety Extra Low Voltage **DC** supply. The product should only be used with a supplied or LightGraphix approved **24 DC** constant voltage driver.

Suitable for mounting on normally flammable surfaces.

Lamp: **24V**

This fitting is **IP67** rated.

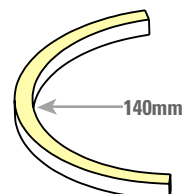
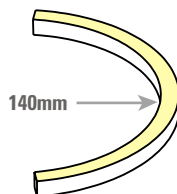
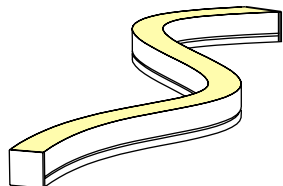
Lumen Maintenance: Lifetime (25° ambient) L80B50 at 50,000 hours

LF16- SINGLE COLOUR			
Product Code	Watts per metre	Max Ambient	Energy Class
LF16	14W	45°C	G

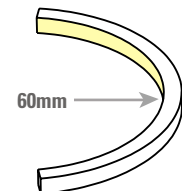
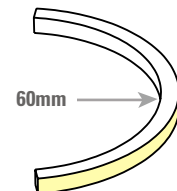
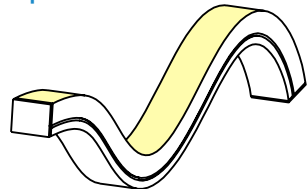
DUAL BEND RADIUS

/LF16D

Side Bend



Top Bend

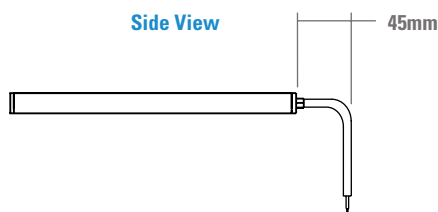


CABLE EXIT DIMENSIONS

/LF16D

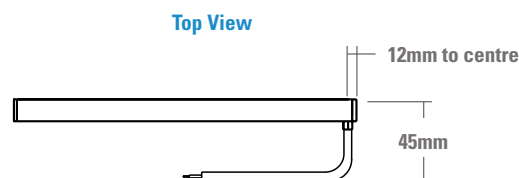
End Exit

Side View



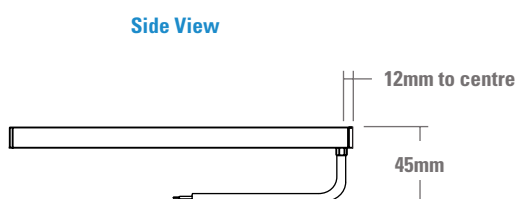
Rear Exit

Top View



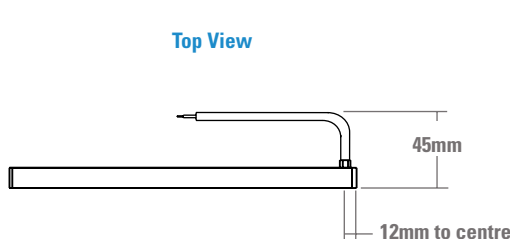
Right Exit

Side View



Left Exit

Top View



LF16D

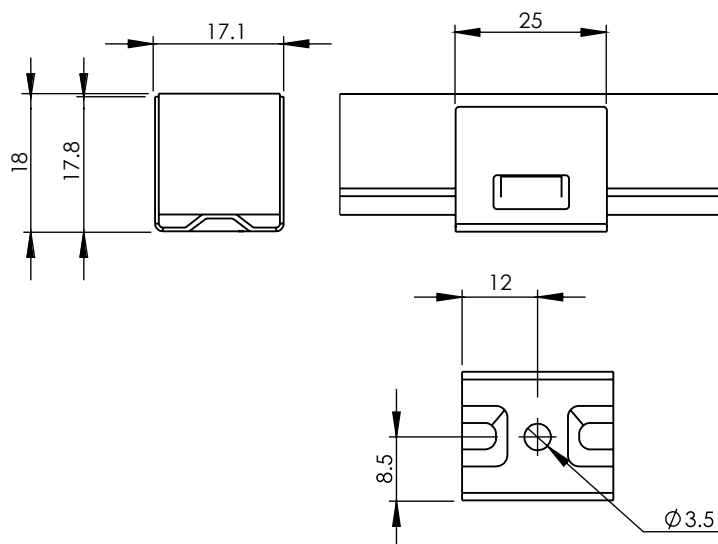
Linear Flex



Install sheet - Page 2

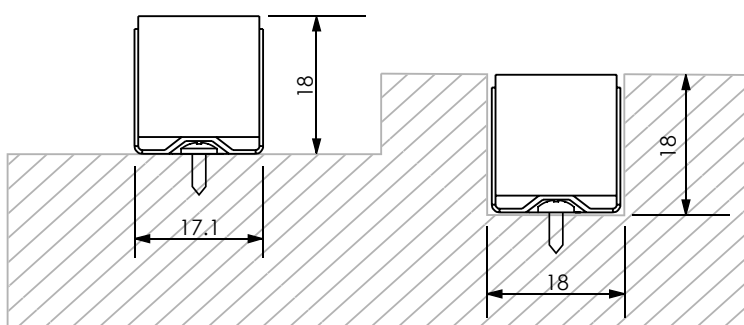
DIAGRAM

/SCLF16



SURFACE MOUNTING

RECESSED MOUNTING



INSTALLATION

/SCLF16

1. See install diagram below for either surface mounted or recessed option for specific dimensions. If recessed install is required, please check groove size requirements.
2. Using one self tapping M3 screw per bracket, screw the stainless steel spring clip onto the mounting surface. We recommend one bracket every 200mm, however you may require more if you have multiple bends.
3. Push fit the flex strip into position. This will clip onto the bracket and hold in place.

NOTE: Connections in wet environments. Make IP68 connection to stop water travelling up the cables into the fittings! Refer to IP connection sheet for further details.

DO NOT ADJUST ONCE IN PLACE.

LF16D

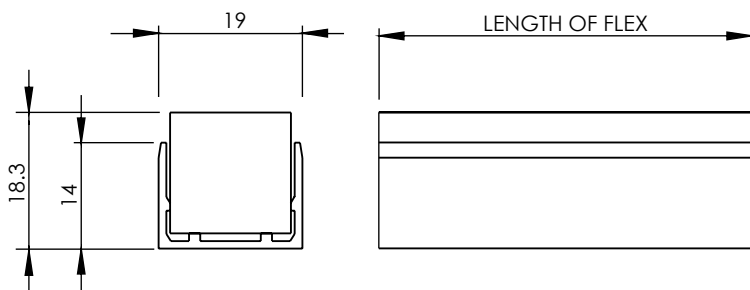
Linear Flex



Install sheet - Page 3

DIAGRAM

/ELF16



INSTALLATION

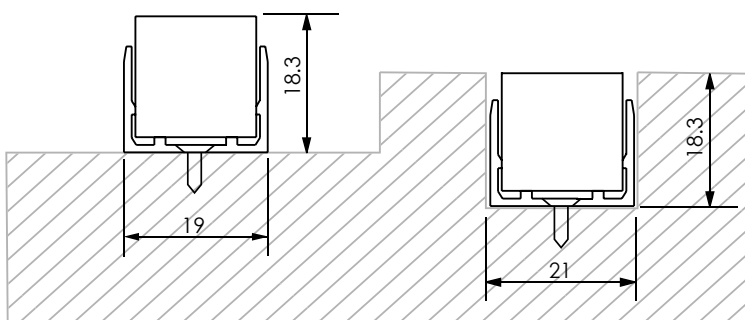
/ELF16

1. See install diagram below for either surface mounted or recessed option for specific dimensions. If recessed install is required, please check groove size requirements.
2. Aluminium channels are supplied in 1 metre lengths. If cutting is required, they must be measured and trimmed to ensure the channels align and match the full length of the linear flex.
3. Using self tapping M3 screws, screw the aluminium channel onto the mounting surface using the screw holes in the channel.
4. Push fit the flex strip into position. This will clip onto the bracket and hold in place.

NOTE: Connections in wet environments. Make IP68 connection to stop water

SURFACE MOUNTING

RECESSED MOUNTING



LF16D

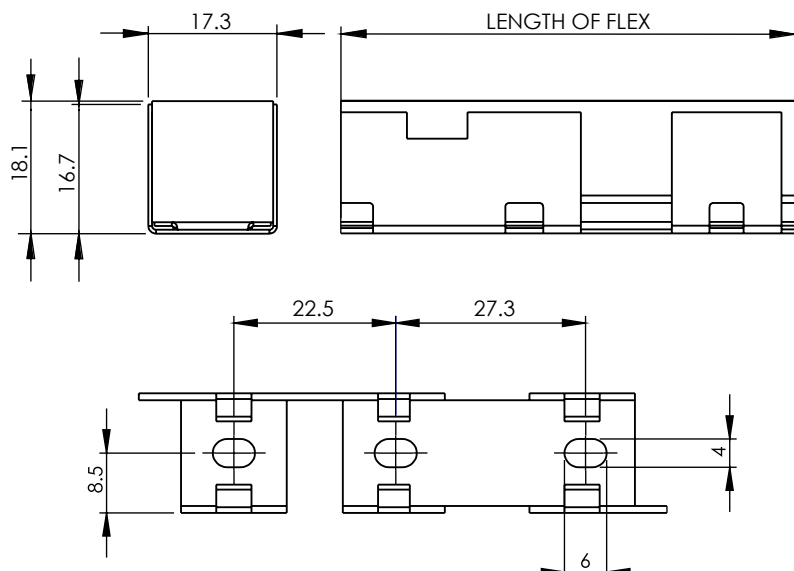
Linear Flex



Install sheet - Page 4

DIAGRAM

/BCLF16



INSTALLATION

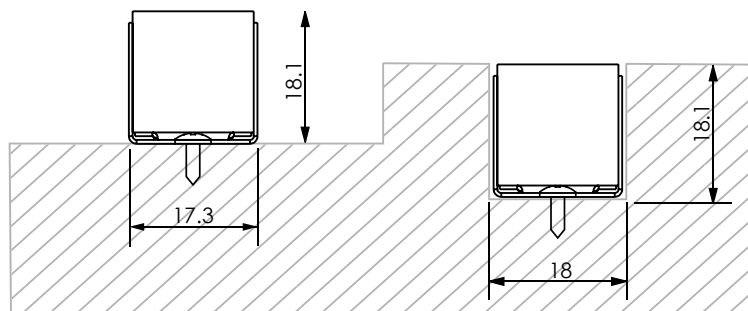
/BCLF16

1. See install diagram below for either surface mounted or recessed option for specific dimensions. If recessed install is required, please check groove size requirements.
2. Stainless steel bendable channels are supplied in 1 metre lengths. If cutting is required, they must be measured and trimmed to ensure the channels align and match the full length of the linear flex.
3. Using self tapping M3 screws, screw the stainless steel bendable channel onto the mounting surface using the screw holes in the channel.
4. Push fit the flex strip into position. This will clip onto the bracket and hold in place.

NOTE: Connections in wet environments. Make IP68 connection to stop water travelling up the cables into the fittings! Refer to IP connection sheet for further details.

SURFACE MOUNTING

RECESSED MOUNTING



LF16D

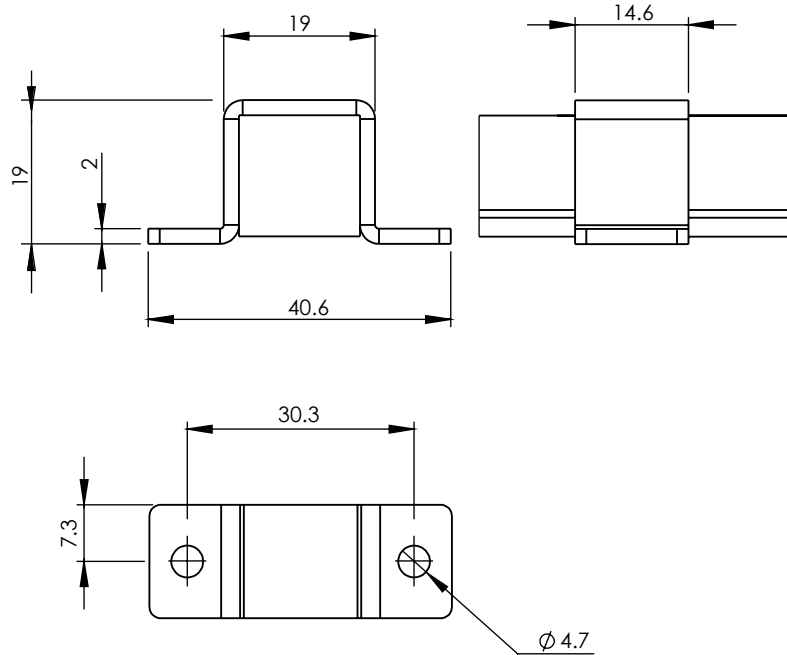
Linear Flex



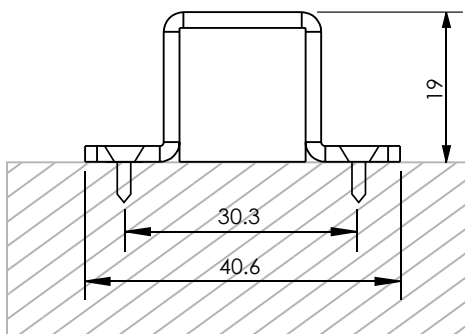
Install sheet - Page 5

DIAGRAM

/CCLF16



SURFACE MOUNTING



INSTALLATION

/CCLF16

1. See install diagram below for specific dimensions.
2. Place the linear flex in the desired location.
3. Place the clear plastic clip over the linear flex and screw in X2 self tapping M3 screws. We recommend using one bracket every 200mm, however you may require more if you have multiple bends.
4. This bracket will hold the linear flex in place.

NOTE: Connections in wet environments. Make IP68 connection to stop water travelling up the cables into the fittings! Refer to IP connection sheet for further details.

DO NOT ADJUST ONCE IN PLACE.

SEE CONSTANT VOLTAGE WIRING SHEET FOR IN PARALELL WIRING DIAGRAM

Do not power up until fitting is wired correctly! Constant voltage LEDs must be wired in paralell, polarity is critical. See table for polarity of cables.

IMPORTANT

Make sure that all cables and connections are securely connected before switching on the power. Failing to do this can lead to failure of the LEDs and/or the driver. If the LEDs do not work upon power up, turn off the power source immediately and check the polarity of the wiring. To reduce the risk of strangulation the flexible wiring connected to this luminaire shall be effectively fixed to the wall if the wiring is within arm's reach. Any attempt made to open up and/or modify the luminaire will invalidate the manufacturers warranty. This is inclusive of but not limited to removal of the LightGraphix product label or removal of any parts from the main body of the product including bezels, electrical components and factory fitted fixing methods (unless otherwise stated in these instructions). Luminaire should be wired no further than 5 meters away from a SELV constant voltage LED driver (based on a 1mm squared cross sectional cable). Forward voltage of luminaire is 24V. Terminal block not included. Installation must be performed by a qualified person. For connections made in dry environments 2 x Wago 221-2411 or connections with similar specifications are recommended. For damp or wet environments a connector of the same electrical specification but with a suitable IP rating should be used.

CORE COLOUR & POLARITY		
Colour of Cable	Red	Black
Polarity	+	-

MAINTENANCE

Clean with soft damp cloth
LED: Please contact LightGraphix

CONNECTION

- Wire Connection Method: Clamp
- No. of Positions: 1Way
- Rated Voltage: 450V
- Rated Current: 32A
- Wire Size (stranded): 18 - 14AWG